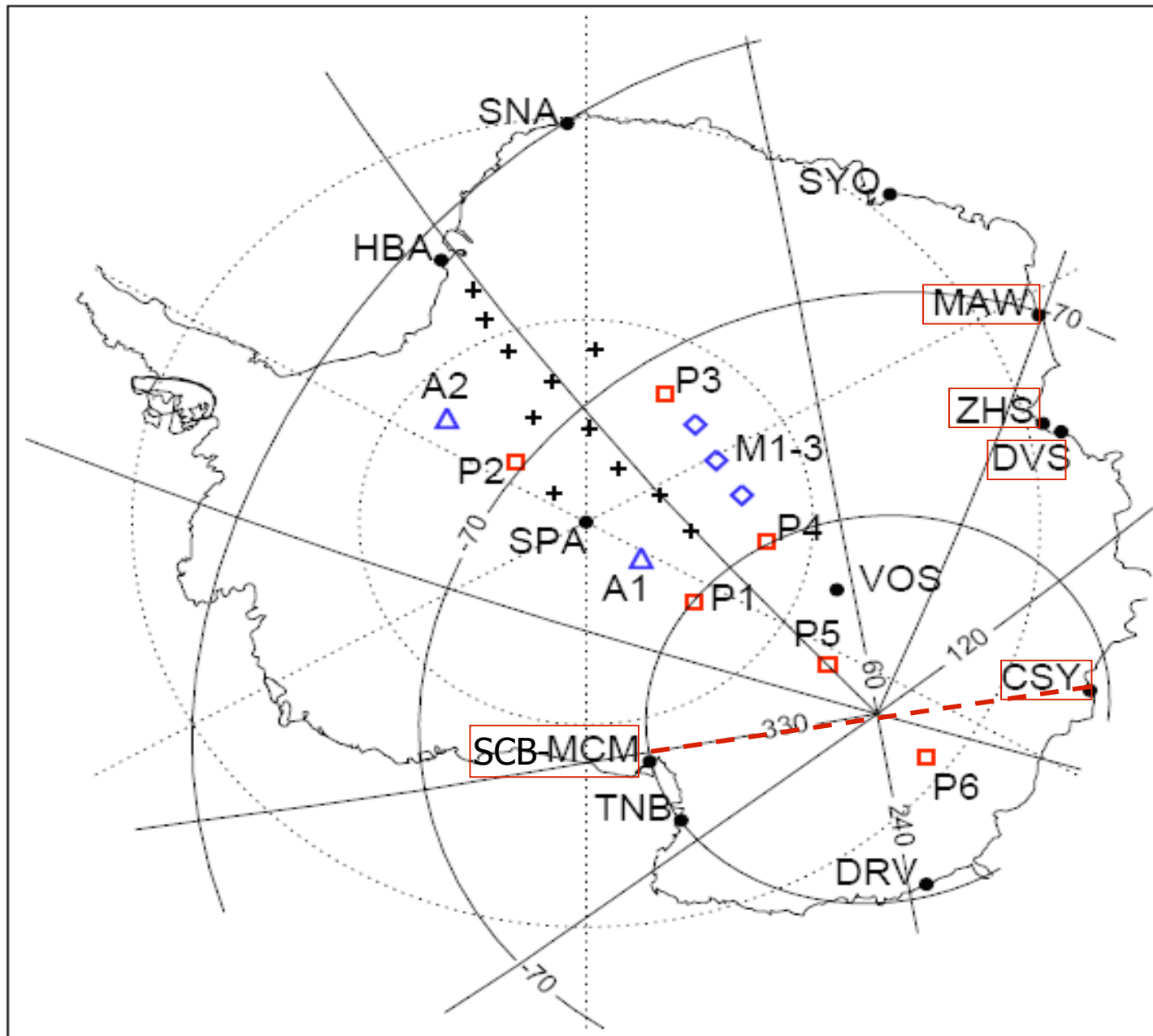


# Australian Magnetometer Networks

- Research Funding is very difficult to obtain; currently in Australia (<20% success rate).
- No networks in operation or planned for mainland Australia.
- Operations confined to Antarctic and high latitude research.
- Five permanent stations: Casey (PC), Davis (Cusp), Mawson (Auroral), Macquarie Island (P/pause), Zhon Shan (PRC), Scott Base (NZ).
- Seasonal inland portable magnetometers deployed to provide close-spaced network

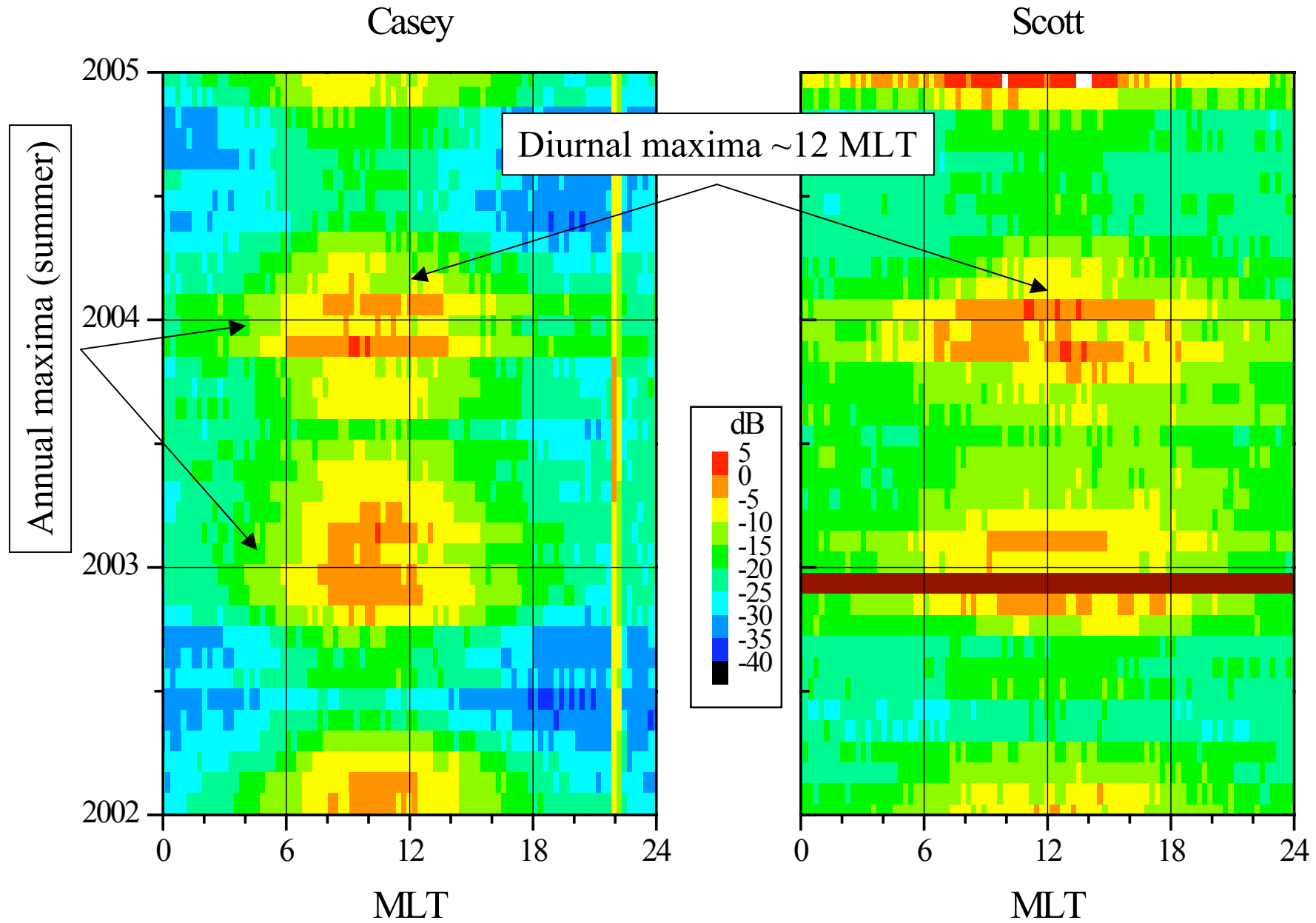
# Australian Antarctic Magnetometer Stations



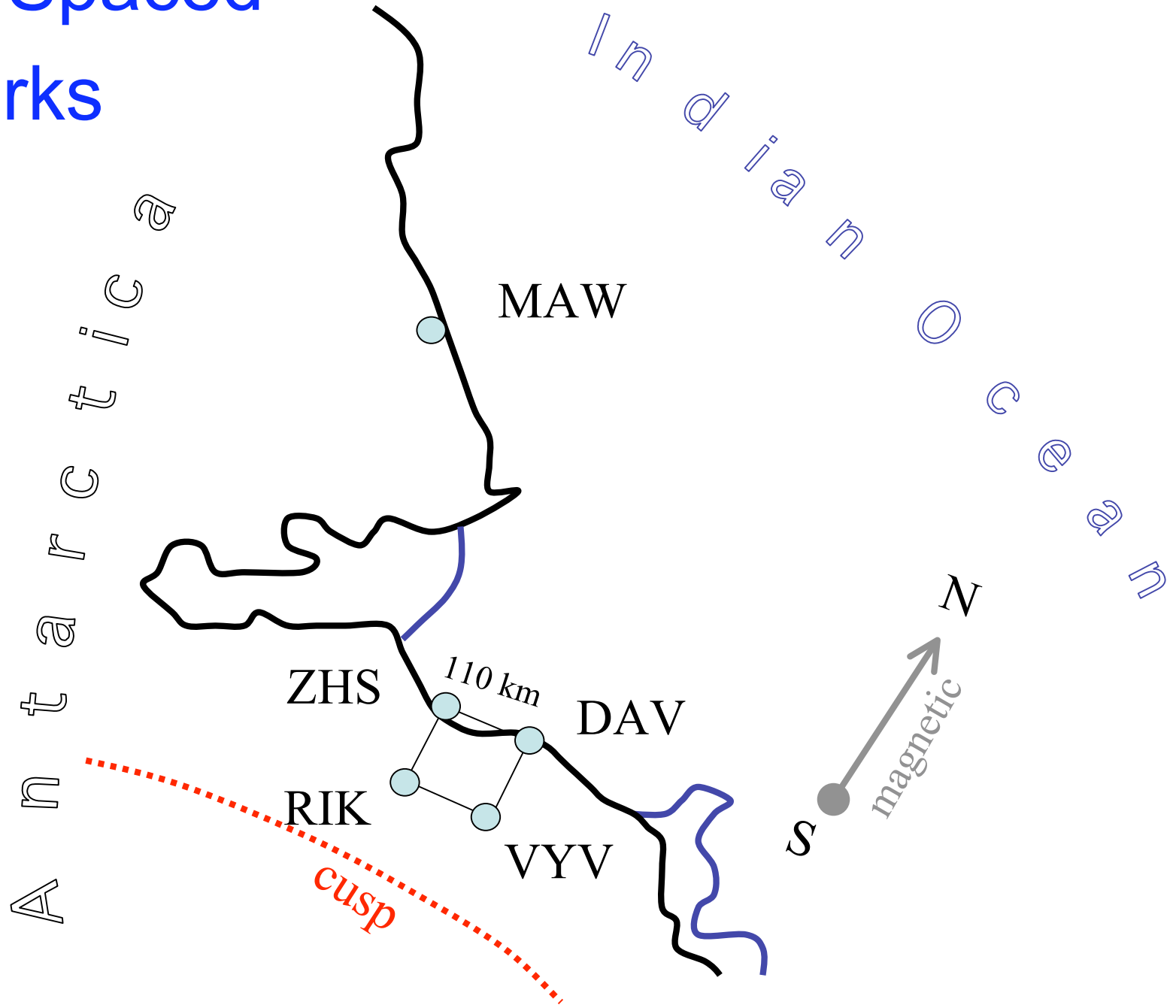
US-AGO □  
 BASmag △◇  
 TerraNova TNB

AAMnet	
Casey	CSY
Davis	DVS
Mawson	MAW
ScottBase	MCM
McMurdo	MCM
ZhonShan	ZHS

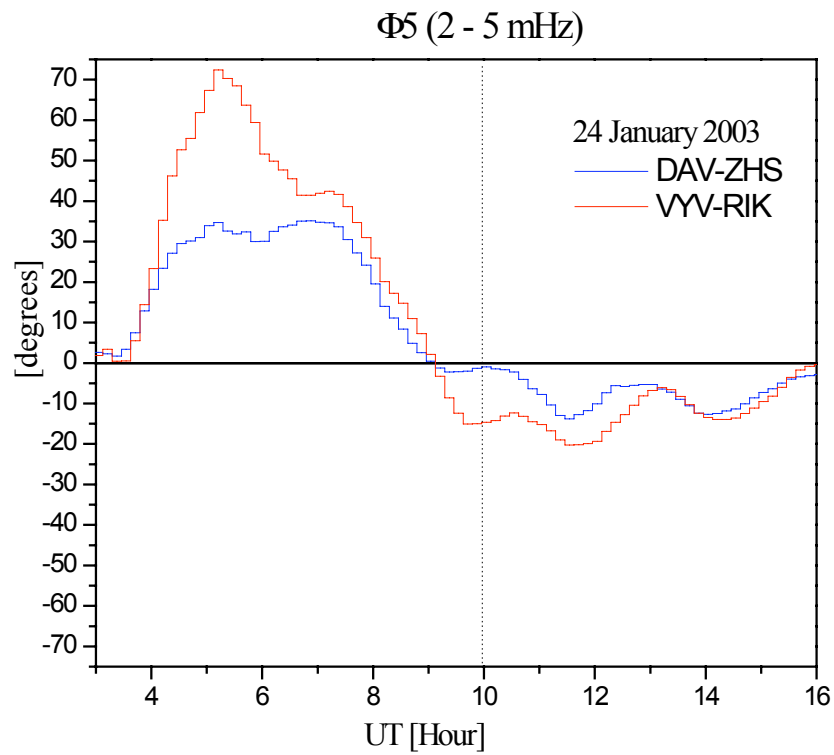
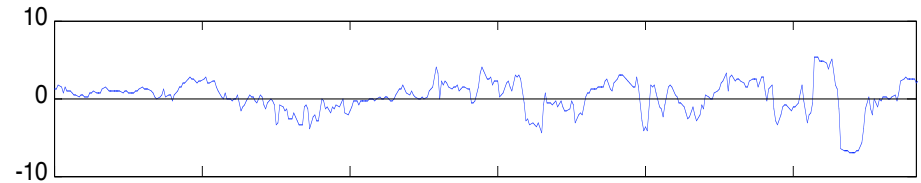
# Diurnal-seasonal Pc3-4 power



# Close-Spaced Networks



# IMF control of field line topology



# IMF control of field line topology

